

Flexible LED Film

Product series: Flexible LED Film

Department: Technical Department

Version : A0

Update Date: 2023.12

Catalog

I. Product Description	1
1.1 Product Introduction	1
II. Structural Appearance	1
III. Product Detailed Parameters	2

I. Product Description

1.1 Product Introduction

flexible LED film offers a unique combination of flexibility, thinness, and transparency, making it a versatile technology with applications across various industries. Its ability to conform to unconventional shapes opens up creative possibilities for designers and architects, while its high resolution and brightness make it suitable for dynamic visual displays in a wide range of setting.

(1) Flexibility

One of the key features of flexible LED film is its flexibility, allowing it to conform to curved surfaces and unconventional shapes.

This flexibility makes it ideal for applications where traditional rigid displays cannot be easily integrated.

(2) Thin and Lightweight:

The film is thin and lightweight, making it suitable for installations where space and weight considerations are crucial.

Its slim profile allows for unobtrusive integration into various environments.

(3) Transparency:

Many flexible LED films offer transparency, allowing users to maintain visibility through the display.

This feature is beneficial for applications where see-through capabilities are required, such as retail windows or interactive installations.

(4) High Resolution and Brightness:

Despite their thin form factor, flexible LED films often provide high resolution and brightness, ensuring vibrant and clear visuals.

This feature makes them suitable for applications ranging from advertising to entertainment.

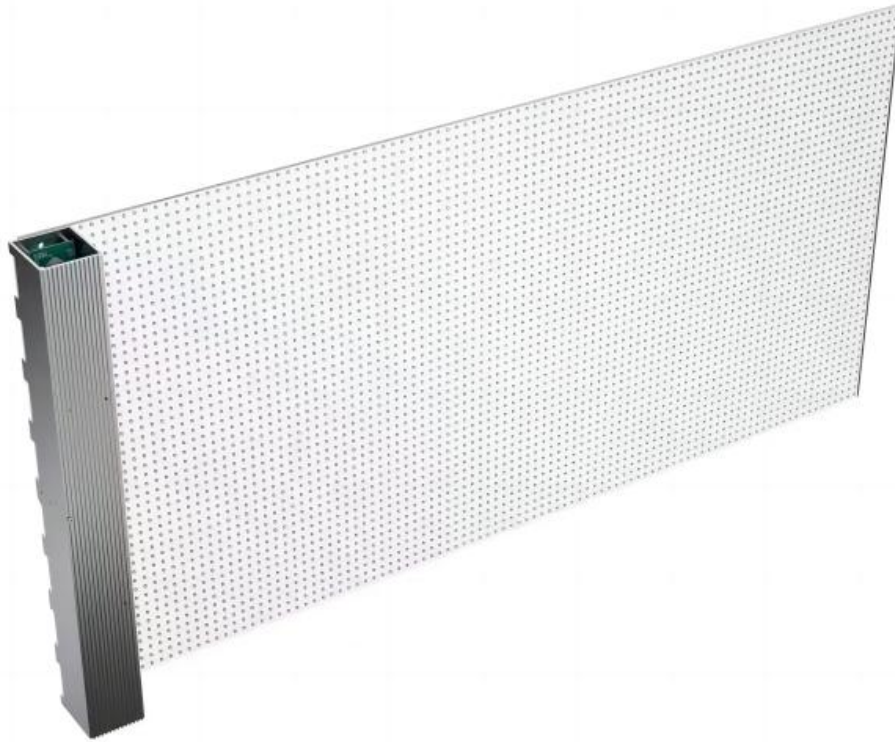
(5) Customizable Sizes:

Flexible LED films are available in various sizes, and some products allow for customization to fit specific project requirements.

This adaptability makes them versatile for different installations.

II. Structural Appearance

Single module 400x1000mm



III. Product Detailed Parameters

Model	P6	P6 . 25	P8	P10	P15	P20
Module Size (mm)	816* 384	1000*400	1000*400	1000*400	990* 390	1000*400
LED Structure (SMD)	SMD1515	SMD1515	SMD1515	SMD1515	SMD2022	SMD2022
Pixel Composition	R1G1B1	R1G1B1	R1G1B1	R1G1B1	R1G1B1	R1G1B1
Pixel Pitch (mm)	6*6	6. 25*6. 25	8*8	10* 10	15* 15	20* 20
Module Resolution	136* 64 = 8704	160*40 =6400	125* 50 = 6250	100*40 =4000	66* 26 = 1716	50* 20 = 1000
Screen	27777	25600	15625	10000	4356	2500

Resolution/m ²						
Brightness (nits)	2000/4000	2000/4000	2000/4000	2000/4000	2000/4000	2000/4000
Transparency	90%	90%	92%	94%	94%	95%
View Angle °	160	160	160	160	160	160
Input Voltage	AC110-240V 50/60Hz					
Maximum power consumption (W/m ²)	600w/m ²					
Average power consumption (W/m ²)	200w/m ²					
Work Temperature	-20°C-55°C					
Weight	1.3 kg	1.3kg	1.3 kg	1.3 kg	1.3 kg	1.3 kg
Thickness	2.5mm	2.5mm	2.5mm	2.5mm	2.5mm	2.5mm
Drive Mode	Static	Static	Static	Static	Static	Static
Life Span	100000H	100000H	100000H	100000H	100000H	100000H
Gray Scale	16bit	16bit	16bit	16bit	16bit	16bit